

**COMUNE DI SANTADI**  
 Provincia di Cagliari  
**PIANO PARTICOLAREGGIATO**  
**DI SANTADI CENTRO**



TAV.  
**4-D**

RILIEVO  
 SETTORE D  
 Pianta - Profili

SCALA  
 1:200

i tecnici incaricati:

prof. ing. Gian Paolo Gamberini  
 prof. ing. Antonello Sama

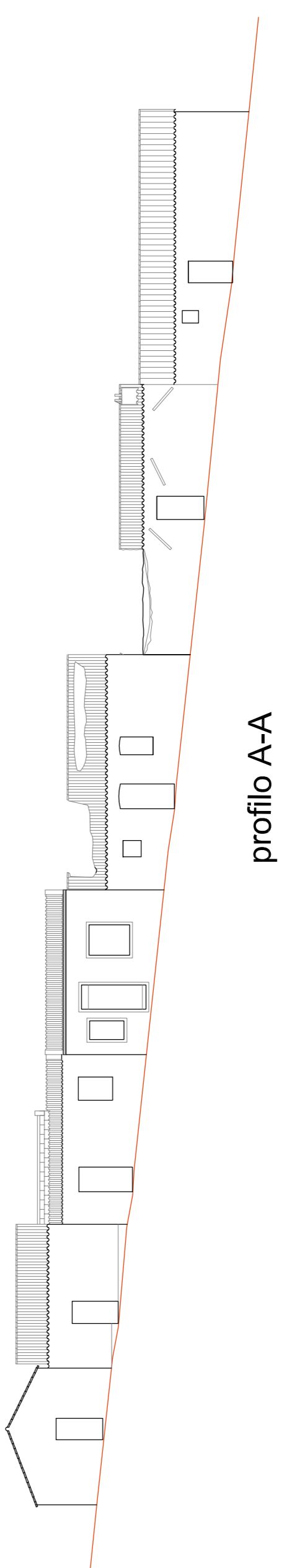
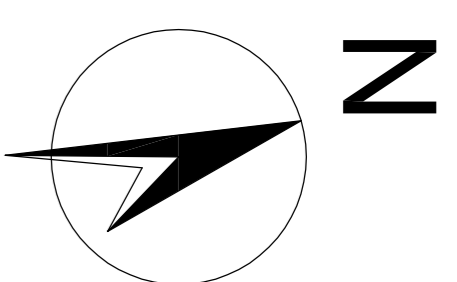
gruppo di lavoro:

ing. Costantino Manca  
 ing. Gian Piero Cossu  
 ing. Ivan Francesco Ghisu  
 ing. Fausto Cuboni  
 ing. Alessandro Sitzia

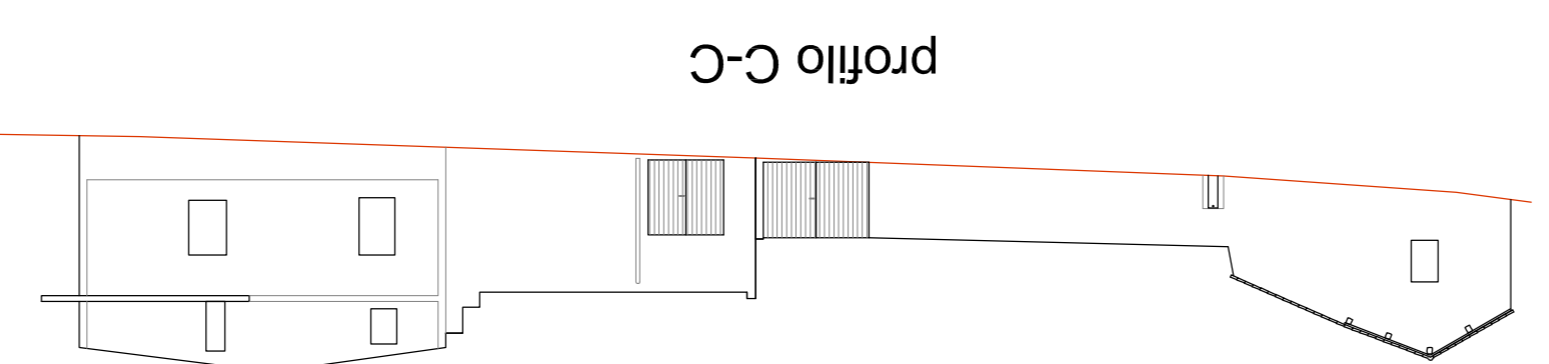
Il Segretario Comunale

Il Sindaco

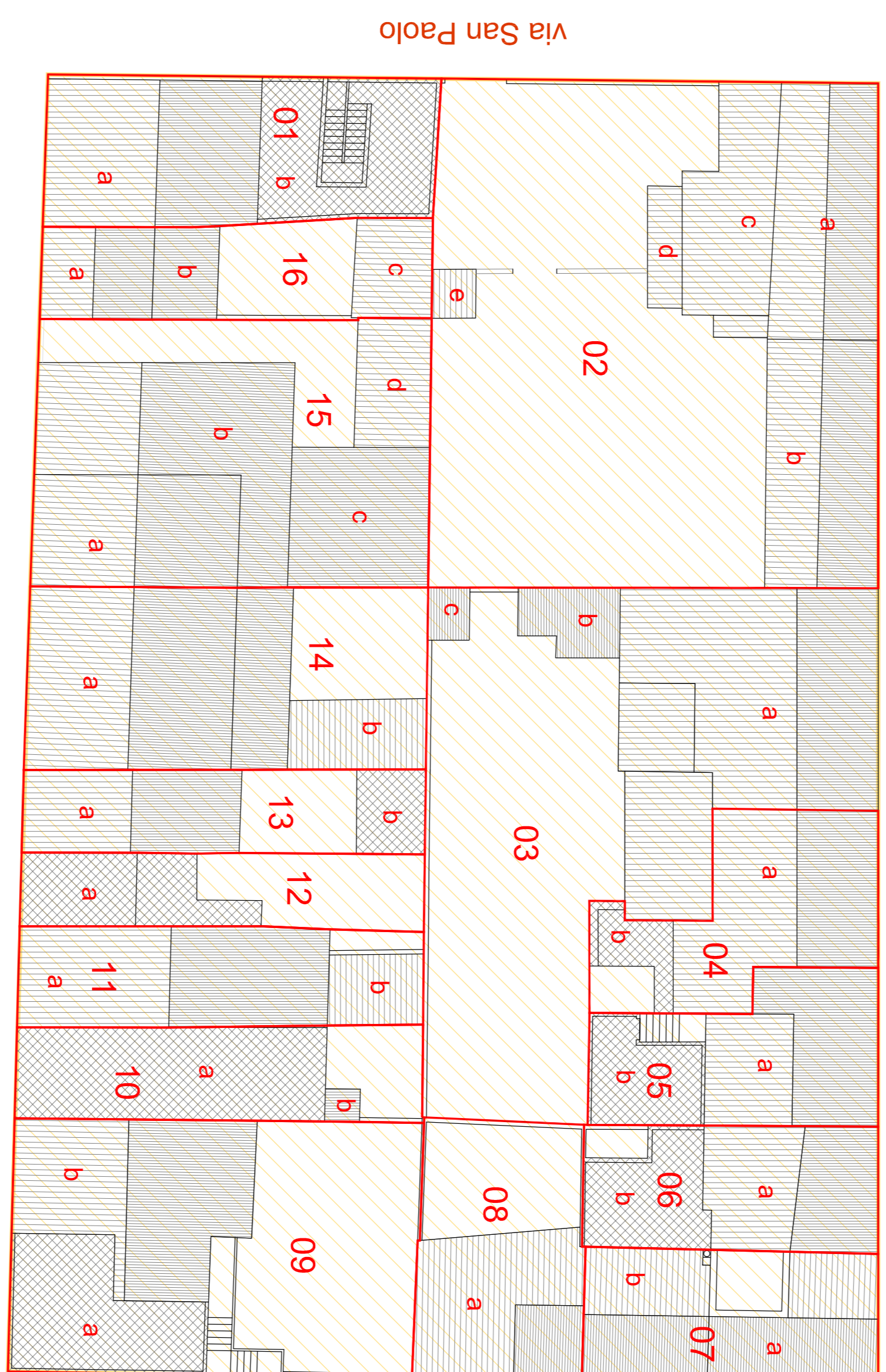
Il Tecnico Comunale



profilo A-A



profilo C-C



vico Carcere

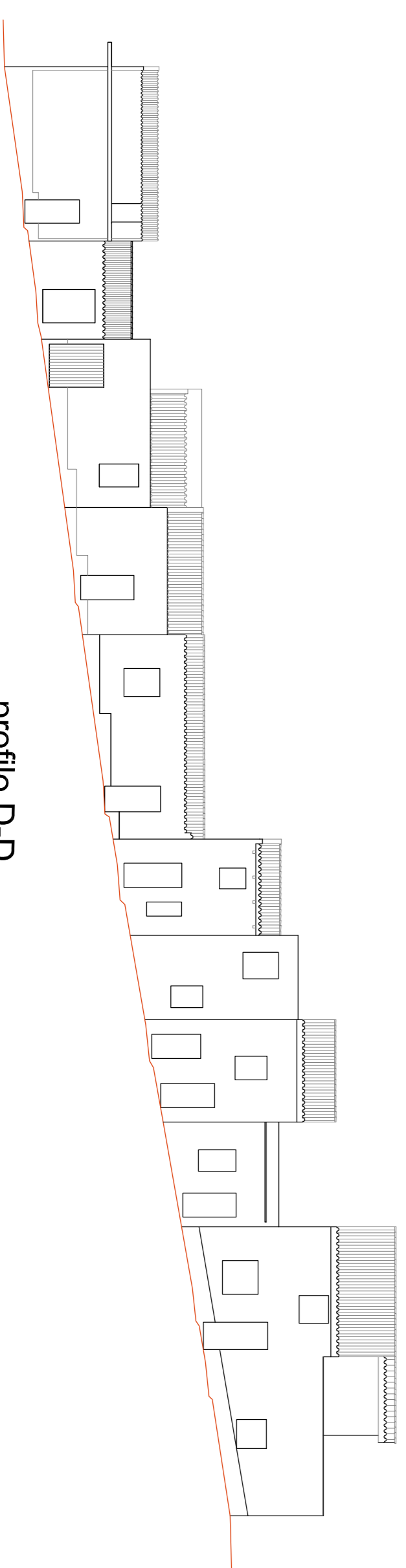
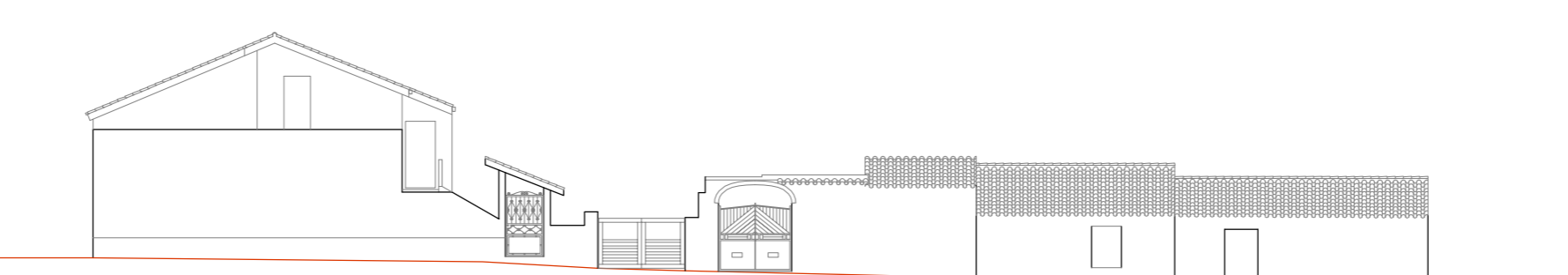
via Carcere

via Umberto I

Via San Paolo



profilo B-B



profilo D-D

**Settore C**

- Zona "A1"
- Zona "B1"
- Zona "S"
- Limite Comparto